

Models: T5

# On-Board Charger Replacement Kit



This new battery charger replacement kit is equipped with quick-disconnect cable connectors. If the previous charger is not equipped with the quick-disconnect cable connectors, the supplied jumper cable is required to install new charger.

**IMPORTANT:** The quick-disconnect connectors must be secured in a dry place away from the battery tray. Using the supplied cable-ties, secure the connectors next to the control panel as described in the below instructions.

## INSTALLATION INSTRUCTIONS:

Installation Time: 1 Hour

**TOOLS REQUIRED:** 9/16", 5.5mm, 10mm and 13mm Sockets, 4mm Hex Wrench, Phillips Screwdriver.

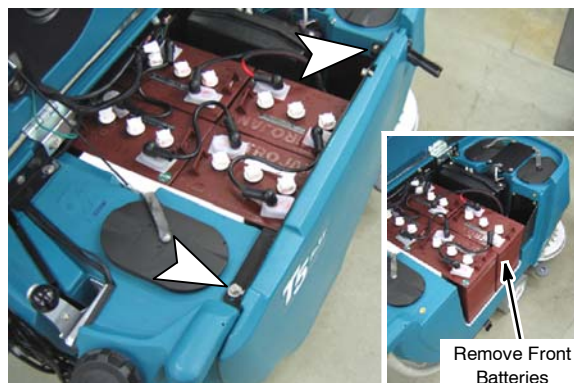
### BATTERY CHARGER INSTALLATION

1. Park the machine on a clean level surface.
2. Turn off the machine and remove the key.

**FOR SAFETY: Before installing kit, stop on level surface, turn off machine, and remove key.**

3. Remove the right side panel from machine to allow for battery removal (Figure 1).

**FOR SAFETY: Wear protective gloves and eye protection when handling batteries and battery cables. Avoid contact with battery acid.**

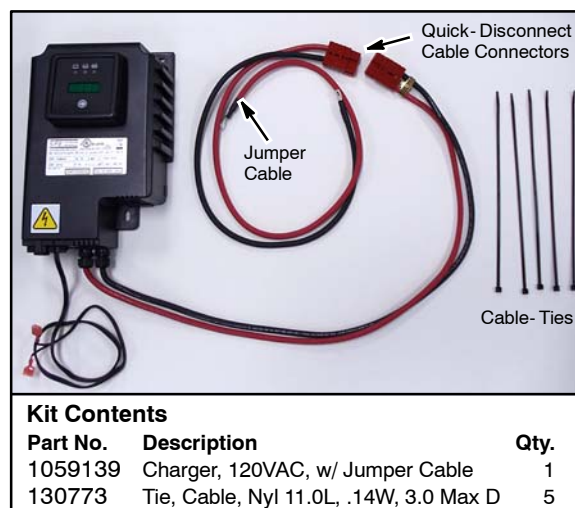


**Fig. 1**

4. Disconnect the positive and negative battery cables and remove the two front batteries from machine.

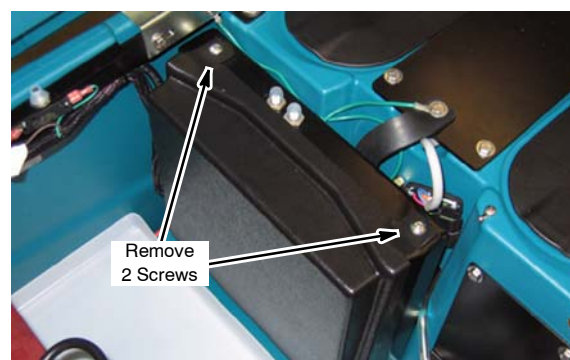
**Skip to step 7 if old charger is equipped with the quick-disconnect cable connectors.**

5. Remove the control box cover to access the charger cable connections (Figure 2).



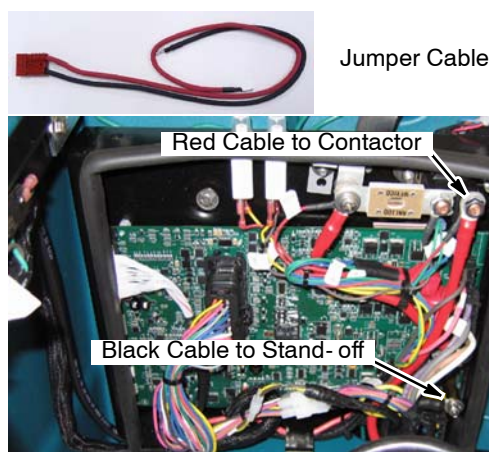
#### Kit Contents

Part No.	Description	Qty.
1059139	Charger, 120VAC, w/ Jumper Cable	1
130773	Tie, Cable, Nyl 11.0L, .14W, 3.0 Max D	5



**Fig. 2**

6. Connect the jumper cable to terminals as shown (Figure 3). Replace the cover.



**Fig. 3**

## On-Board Charger Replacement Kit INSTALLATION INSTRUCTIONS - Continued

7. Mount the new battery charger to machine.
8. With the squeegee lift bracket removed, connect the two black charger wires into the yellow/4A/4B and blue/26 wire terminals (Figure 4). Re-attach squeegee lift bracket to machine.

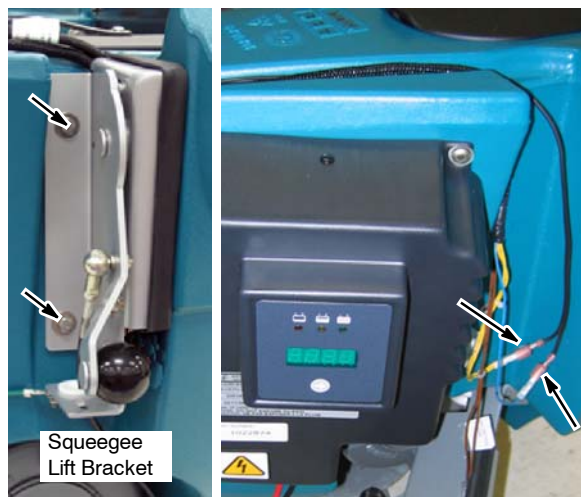


Fig. 4

9. Remove the machine's left side panel. Three mounting screws secure the panel into place (Figure 5).

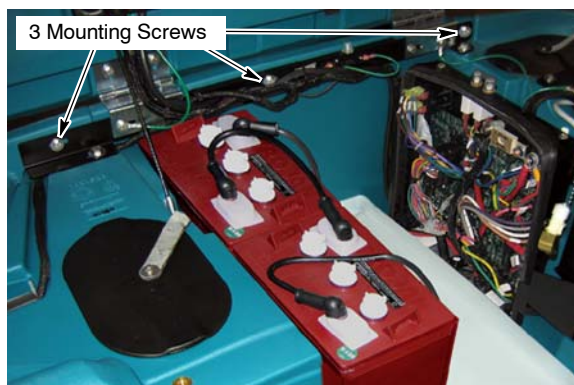


Fig. 5

10. Using the supplied cable-ties, route the charger cables as shown and secure the cable connectors next to the control panel as shown below (Figure 6).

**IMPORTANT: The quick-disconnect connectors must be secured in a dry place away from the battery tray.**

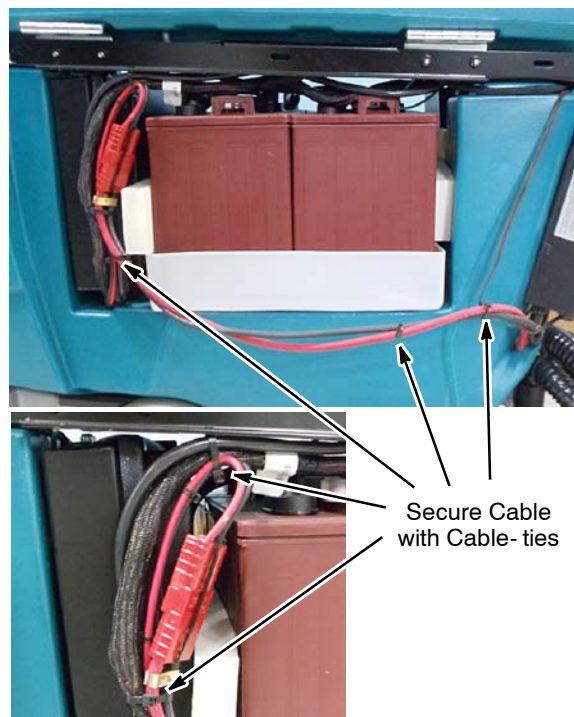


Fig. 6

11. Re-install side panels and batteries.

### ON-BOARD BATTERY CHARGER SETTINGS

The charger is preset to charge wet/lead acid batteries. To change the setting, unplug the charger, peel up the corner of the display label and set the DIP switches as shown. Failure to properly set will result in battery damage.



Wet/Lead Acid Batteries  
(Factory Setting)

*NOTE: The following settings apply to T5 chargers manufactured after 09/01/2012.*



AGM MK Batteries



AGM Discover Batteries